

NEW FUNCTIONALITY IN SIMLOX VERSION 5



SIMLOX version 5 introduces a number of improvements which increase the flexibility when creating and gradually refining models of virtually any logistic support scenario. These include improved mission control, preventive maintenance linked to items and extended ability to model system formations.

KEY ENHANCEMENTS

PREVENTIVE MAINTENANCE LINKED TO ITEMS

IMPROVED MISSION CONTROL

EXTENDED ABILITY TO MODEL SYSTEM FORMATIONS

TOLERANCE TIME ON NON-CRITICAL FAILURES

INCREASED OPTIONS FOR ROBBING

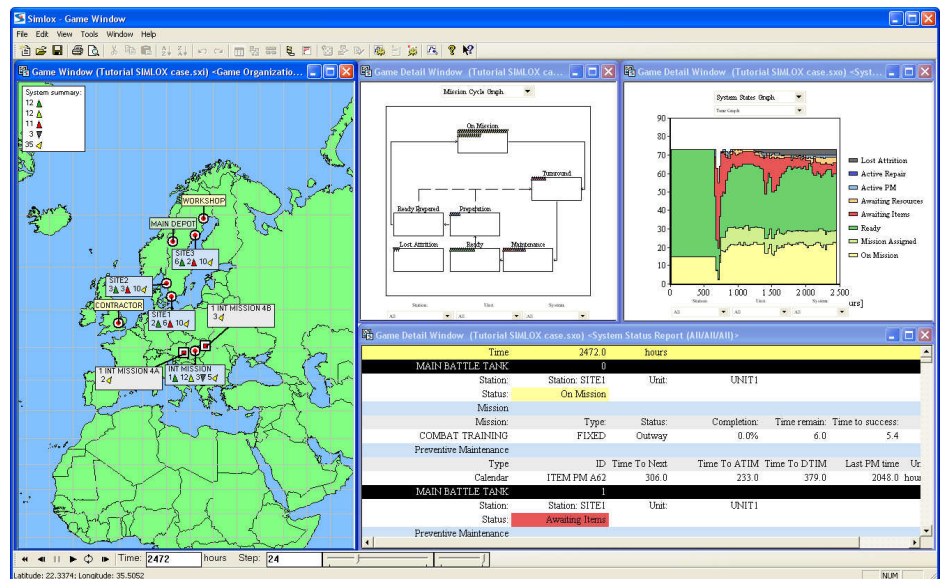
IMPROVED FLEXIBILITY IN RESULT WINDOW

NEW EXPORT OPTIONS TO CATLOC AND EXCEL

SIMLOX IS A POWERFUL AND VERSATILE TOOL FOR SIMULATION AND ANALYSIS OF COMPLEX OPERATIONAL AND LOGISTIC SUPPORT SCENARIOS. SIMLOX MAKES IT POSSIBLE TO SIMULATE HOW PERFORMANCE VARIES OVER TIME GIVEN A CERTAIN OPERATIONAL PROFILE, SUPPORT STRUCTURE, SPARES ASSORTMENT AND MAINTENANCE RESOURCES.



www.systecon.co.uk



ITEM PM

In SIMLOX version 5 it is possible to link preventive maintenance (PM) to items with individual counters. This means that item replacements due to other maintenance activities will be correctly taken into account when triggering PM events.

It is also possible to prelife items in a similar way as systems.

IMPROVED MISSION CONTROL

The new SIMLOX version contains new modeling options for when a system must leave a mission and when a mission must be stopped.

It is now possible to specify different system requirements for mission start and for mission continuation.

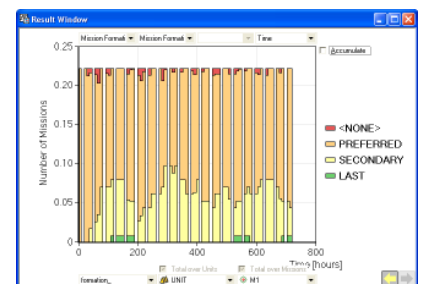
It is also possible to specify if a critical failure, damage or PM immediately stops a system on mission or if the current mission can be concluded.

FORMATION IMPROVEMENTS

In SIMLOX version 4 system formation was introduced in order to allow specification of system requirements for missions in a flexible and powerful way.

Now the ability to model system formations has been extended, allowing it also for continuous and extendable missions.

On top of this the results presentation has been improved, showing results over time in both table format and graphical format.



TOLERANCE TIME ON NON-CRITICAL FAILURES

SIMLOX version 5 offers the possibility to set a time limit on non-critical failures or damage. When the time limit is exceeded the failure/damage becomes critical and a system in mission operation must immediately abort. If the system is ready at the unit however, waiting for spares or resources, repair actions will start immediately and any waiting for spares or resources will get higher priority.

IMPROVED RESULT WINDOW

The new result window that was introduced in SIMLOX version 4 has now been improved with more flexibility and increased user interaction.

Most of the results are now available in graphical form in the result window.

Furthermore, legend texts and colours have been reviewed to improve understanding and visibility.

NEW RESULTS IN SIMLOX

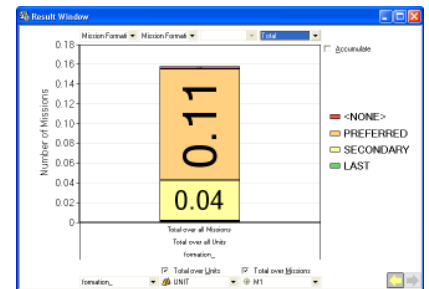
There are several new results being introduced in SIMLOX version 5:

Mission Formation Time

Shows the use of different formations over time per unit and/or mission type.

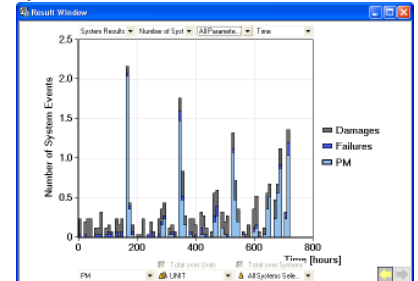
Mission Formation Qty

Presents the use of different formations per individual mission.



NPMS

In addition to number of failures and number of damages per system this new result shows the number of preventive maintenance events per system.

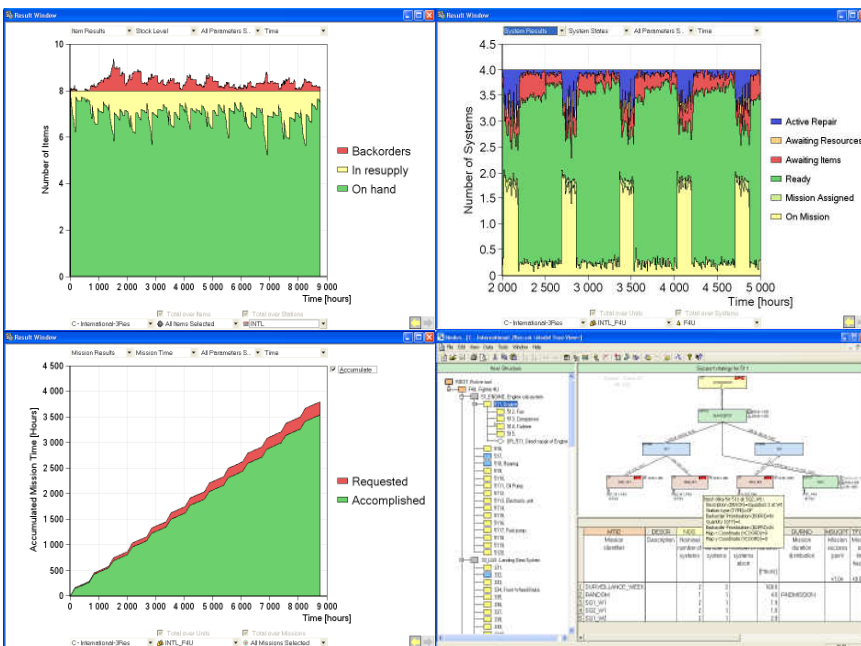


WTT

This new result shows the waiting time for spares excluding the tolerance time specified in WTLIM (Waiting Time Limit).

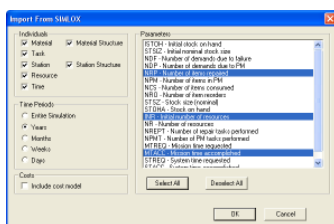
Furthermore, snap shot results have been added for the results Mission Time, System Time and for Mission Formation Time.

In the result window results can be presented as totals over a subset of systems, units, items and resources.



EXPORT TO CATLOC

SIMLOX version 5 has been prepared to enable export of results into CATLOC for extensive cost calculation. When importing results from SIMLOX any type of cost model can be used in CATLOC.



In CATLOC A SETUP DIALOGUE IS USED TO DEFINE VARIOUS IMPORT SETTINGS.

EXTENDED ROBBING OPTIONS

Robbing means that a system in critical repair waiting for spares can borrow an item from another system in repair at the same unit. In SIMLOX version 5 robbing can be specified individually per item or per station.

INTEGRATED HELP AND USER'S REFERENCE

By aligning the on-line help and the Users Reference SIMLOX version 5 provides users with an improved support when working in SIMLOX.

Beginners will find the sections Introduction and Quick Start helpful to get started and the new SIMLOX Model section provides useful scenario descriptions.



SIMLOX IS DEVELOPED BY SYSTECON AB. SALES AND SUPPORT OUTSIDE SCANDINAVIA IS PROVIDED THROUGH A NETWORK OF QUALIFIED REPRESENTATIVES. FOR INFO: SYSTECON@SYSTECON.CO.UK