



# VERSION 5

Simplify for the modeler! This is the central goal of the new CATLOC version 5. The two main strengths of CATLOC are still its powerful analysis capabilities and fully customizable, generic cost model. In addition, version 5 brings the ease-of-use up to a new level. The challenges normally associated with generic cost models are efficiently reduced by the enhancements below.

## KEY ENHANCEMENTS

SIMPLIFIED MODELING

NEW MODELING VIEW

NEW MODELING TEMPLATES

INPUT DATA FROM INCLUDE FILES

MULTI-DOMAIN DEFINITION OF ATTRIBUTES

IMPROVED LOG WINDOW

NEW VIEWS FOR FLEXIBLE COST AGGREGATION

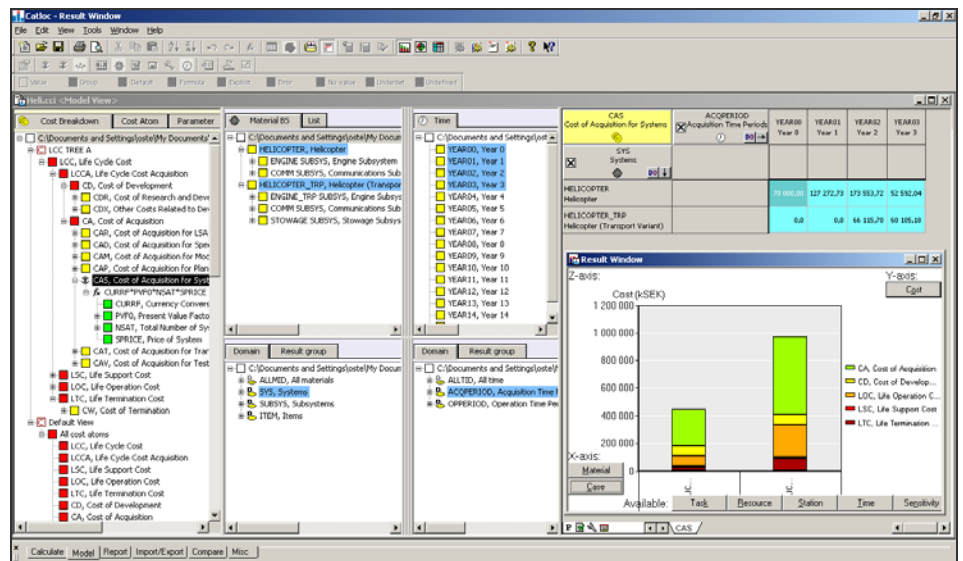
WINDOWS VISTA COMPLIANT

### CATLOC IN BRIEF

CATLOC is a comprehensive, flexible cost/revenue analysis tool with outstanding analysis capabilities. It accommodates any type of LCC and Whole Life Costing as well as planning and budgeting, cost monitoring and other types of cost analysis.

CATLOC introduces a new approach with a five dimensional cost model that can be 100% user defined. A set of cost model templates is also provided for modelers not wanting to start from scratch

Continued on next page



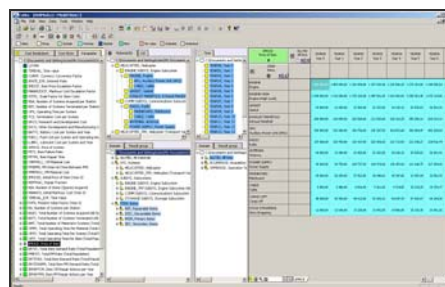
NEW CATLOC MODELLING VIEW WHERE THE MODELER CAN CREATE AND REFINE A CASE IN A GRAPHICAL ENVIRONMENT WITHOUT HAVING TO SWITCH BETWEEN NUMEROUS TABLES AND VIEWS

### SIMPLIFIED MODELING

CATLOC's generic and flexible data model enables powerful analysis capabilities. But a generic model may also mean challenges for the modeler in creating and maintaining the cost model. That is why the main aim for CATLOC v5 is simplified modeling.

### NEW MODELING VIEW

The new modeling view is a significant improvement for the modeler. It gives a clear overview of the case and an intuitive, graphical environment for



NEW MODELLING VIEW SHOWING PRICE OF ITEMS

creating, expanding and refining cost models. No more need for tabbing between numerous tables and views.

The view consists of three main objects that the modeler may tailor to suit the needs of the situation:

- Cost breakdown structure (CBS)  
A tree view that allows the user to build the complete CBS by creating and editing costs and cost structures, defining functions and parameters, using copy paste & drag and drop. (left in picture)
- Dimension trees  
A tool for describing how different cost elements relate to the five dimensions. For example: what parts they are associated with, which locations and/or resources and during which time the costs occurs. (middle)
- The value view  
Here the modeler can populate and review parameter values and calculated costs. (right in picture)

## NEW MODELING TEMPLATES

Setting up a cost model from scratch in a generic cost model can be tedious and time consuming. Using modeling templates in CATLOC, the modeler can start from a structured basis, without losing any flexibility to adjust and tailor the model as desired. CATLOC version 5 introduces the following three new templates (in addition to the *Default* template from previous versions)

- TR-SAS-054  
Based upon a NATO standard defining best practices in life cycle costing throughout the various NATO Phased Armaments Programming System (PAPS) phases.
- IEC-60300-3-3  
Based upon an LCC standard in the electrotechnical field, issued by IEC (International Electrotechnical Commission). Focuses on costs associated with the dependability of the product, i.e. the product's availability performance and its influencing factors such as reliability, maintainability, and maintenance support performance.
- Unilife  
LCC model for rolling stock developed by UNIFE, the Association of European Rail Industry.

## INPUT DATA FROM INCLUDE FILES

With the new functionality for Include Files it is possible to include data from external sources as direct input for the CATLOC analysis. The data may reside in another CATLOC file or a separate database.

This is convenient when the same data, e.g. a material breakdown structure, is needed in multiple cases. Such data can be kept in a separate file which is "included" in each case, rather than creating a separate copy in each. This means that the modeler only needs to update such data in one file. It is also more certain that the case is run using the most updated information.

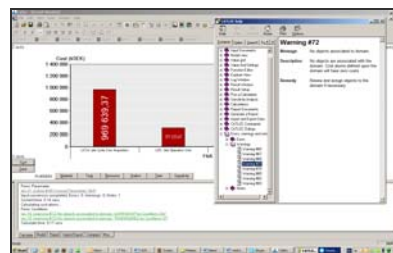
## MULTI DOMAIN DEFINITION OF ATTRIBUTES

In previous CATLOC versions, members in the five dimensions could only belong directly to one

domain, called the principal domain. This restriction led to models that were hard to refine and develop. In version 5 there are no principal domains, instead a dimension member may belong to an arbitrary number of domains.

## IMPROVED LOG WINDOW

The new log window is more visible and more useful. It is docked at the bottom by default which reduces the risk of missing warnings and messages. The log window is divided into different pages (tabs), one for each type of operation. That means that e.g. calculation messages remain after a report generation etc.

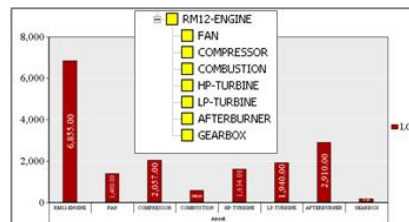


NEW LOG WINDOW AT BOTTOM WITH A CONTEXT SPECIFIC HELP WINDOW

Another important improvement is the possibility to get direct help on errors, warnings and notes. By right-clicking or pressing <F1>, a Help window is opened with a description of the error message and a remedy on how to correct it

## NEW VIEWS FOR FLEXIBLE COST AGGREGATION

CATLOC now supports automatic aggregation of costs in the four dimensions, Material, Station, Task and Resource. This is done using predefined "Aggregate" views.



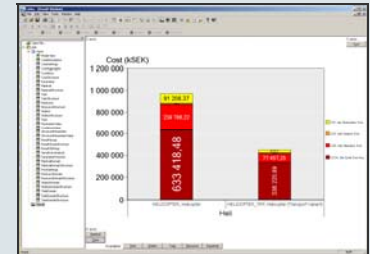
DROP DOWN FOR SELECTING PERCENTILE LEVEL TO BE DISPLAYED

For example, working with the material breakdown structure of an engine, with costs tied to each component (as in picture above), it is often also interesting to view the cost of the engine as costs directly associated with the engine plus costs associated with its parts. Both perspectives are now possible.

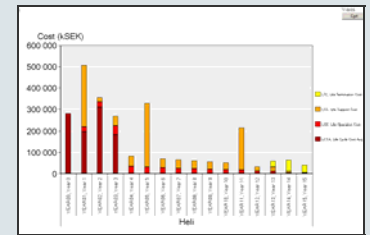
## CATLOC IN BRIEF

continued from first page

The advantages of CATLOC's cost model become very apparent in the analysis view. It is as easy to move from e.g. cost totals on a high aggregate level to a detailed drill down in search of cost drivers.



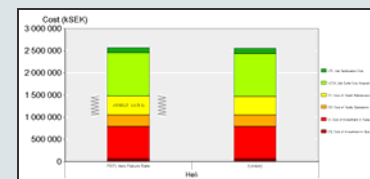
The result window is based upon the pivot value concept, which enhances the analysis capabilities. With a few mouse clicks the resulting costs can be shown distributed over time, across stations, resources, material types and tasks, or any combination of these. The user can also switch between numerical and graphical presentation of the results.



As there is no predetermined LCC structure, the user may choose to start with a very simple, rough model, and continue to expand and refine gradually as desired, rather than enforcing detailed parameter values up-front

CATLOC is an ideal tool for unambiguous side-by-side comparison of alternatives. For example between:

- system design alternatives
- different logistic support solutions
- competing contractors or suppliers



The sensitivity analysis functionality in CATLOC shows which costs and cost aggregates are affected by the variation of a parameter and how much they change.